

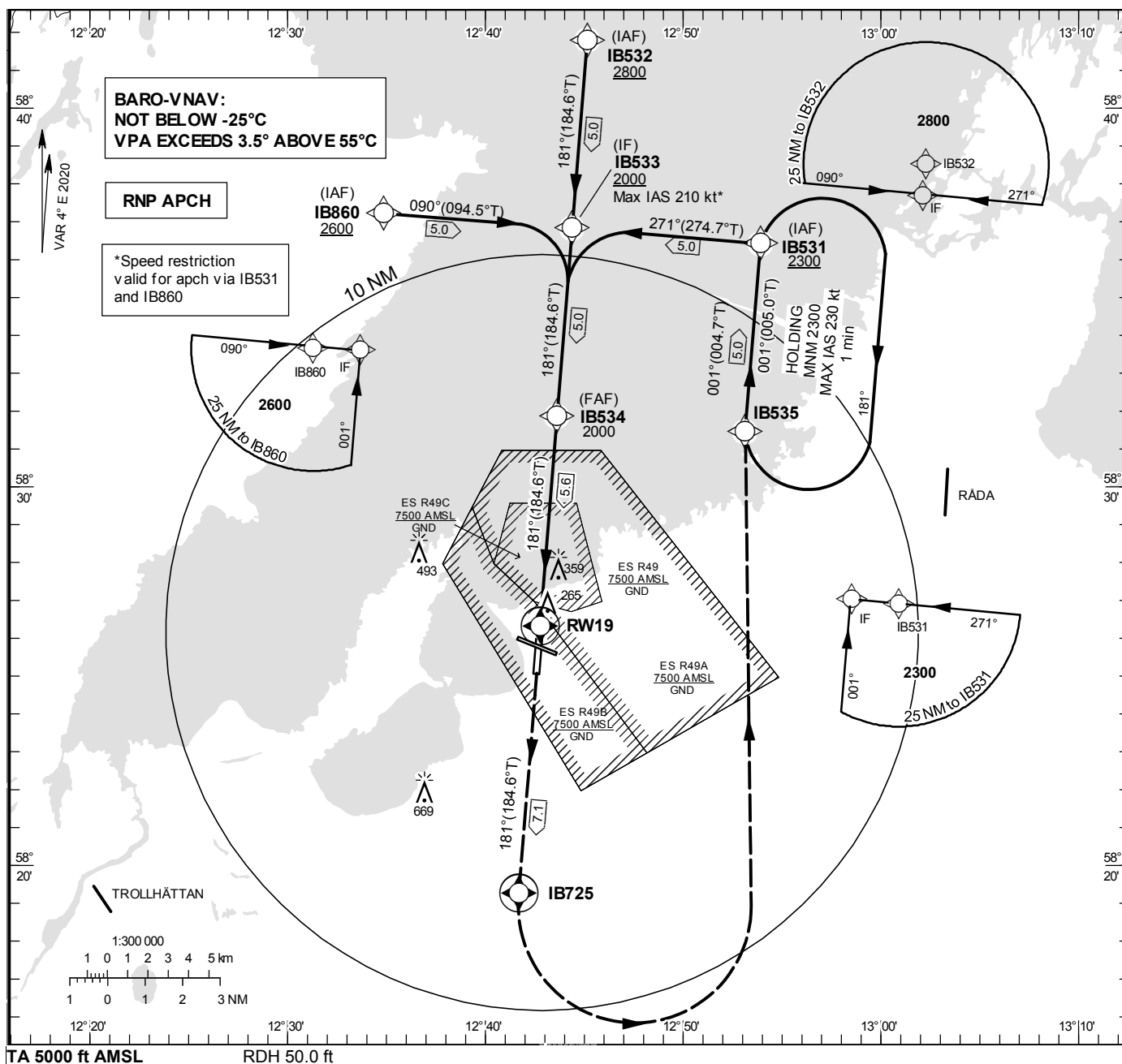
SÄTENÄS

RNP RWY 19

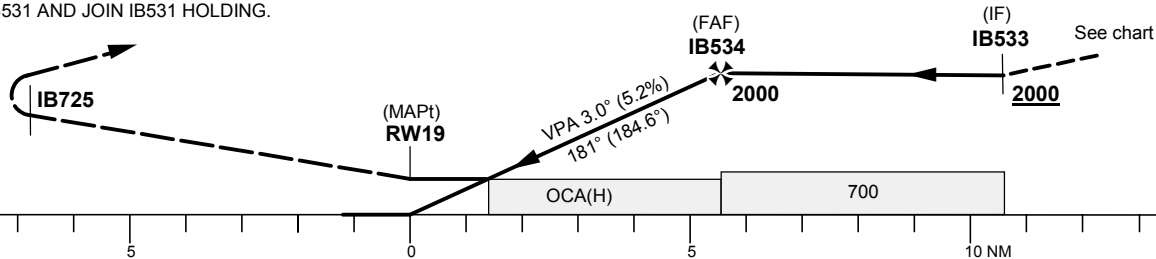
EGNOS Ch 77470 E19A

INSTRUMENT
APPROACH
CHART – ICAO

THR ELEV 175.3 ft, AD ELEV 181 ft

OCH are related to THR.
BRG are MAG (True).
ALT, HGT and ELEV in ft.SÄTENÄS TOWER 128.200
SÄTENÄS APPROACH 134.550

CLIMB TO IB725 (at or above 1500)
TURN LEFT (MAX IAS 230 kt) TO IB535,
CLIMBING TO 2300.
CONTINUE TO IB531 AND JOIN IB531 HOLDING.



OCA (H)					Final approach					Distance FAF-MAPt 5.6 NM				
Cat of ACFT	A	B	C	D	Dist to RWY19 (NM)	2	3	4	5	2	3	4	5	
LPV	396 (221)	408 (233)	416 (241)	427 (252)	ALT	860	1180	1500	1820					
LNAV/VNAV	490 (315)	502 (327)	510 (335)	520 (345)	GS	kt	80	100	120	140	160	180		
LNAV		610 (440)			Rate of descent	ft/min	425	530	635	745	850	955		
Circling	660 (480)	660 (480)	890 (710)	1070 (890)										

CHANGE: Editorial

SÅTENÄS

RNP RWY 19 via IB860

Path Desc	Waypoint Identifier	Fly-over	Course °M(°T)	Dist (NM)	Turn Dir	Altitude	Speed	VPA/RDH	Rec Navaid	Navigation Specification
IF	IB860	-	-	-	-	+2600	-	-	-	RNP APCH
TF	IB533	-	090°(094.5°)	5.0	-	+2000	-210	-	-	RNP APCH

RNP RWY 19 via IB531

Path Desc	Waypoint Identifier	Fly-over	Course °M(°T)	Dist (NM)	Turn Dir	Altitude	Speed	VPA/RDH	Rec Navaid	Navigation Specification
IF	IB531	-	-	-	-	+2300	-	-	-	RNP APCH
TF	IB533	-	271°(274.7°)	5.0	-	+2000	-210	-	-	RNP APCH

RNP RWY 19 via IB532

Path Desc	Waypoint Identifier	Fly-over	Course °M(°T)	Dist (NM)	Turn Dir	Altitude	Speed	VPA/RDH	Rec Navaid	Navigation Specification
IF	IB532	-	-	-	-	+2800	-	-	-	RNP APCH
TF	IB533	-	181°(184.6°)	5.0	-	+2000	-	-	-	RNP APCH

Path Desc	Waypoint Identifier	Fly-over	Course °M(°T)	Dist (NM)	Turn Dir	Altitude	Speed	VPA/RDH	Rec Navaid	Navigation Specification
IF	IB533	-	-	-	-	+2000	-	-	-	RNP APCH
TF	IB534	-	181°(184.6°)	5.0	-	@2000	-	-	-	RNP APCH
TF	RW19	Y	181°(184.6°)	5.6	-	@225	-	-3.0/50	-	RNP APCH
TF	IB725	Y	181°(184.6°)	7.1	-	+1500	-	-	-	RNP APCH
DF	IB535	-	-	-	L	-	-230	-	-	RNP APCH
TF	IB531	-	001°(004.7°)	5.0	-	+2300	-	-	-	RNP APCH

Holding at IB531

Path Desc	Waypoint Identifier	Fly-over	Course °M(°T)	Dist (NM)	Turn Dir	Altitude	Speed	VPA/RDH	Rec Navaid	Navigation Specification
HM	IB531	Y	001°(005.0°)	-	R	+2300	-230	-	-	RNP 1

FAS Data Block

RNP RWY 19

Input data

Operation Type	0
SBAS Provider	1 (EGNOS)
Airport Identifier	ESIB
Runway	19
Runway Letter	0 (None)
Approach Performance Designator	0
Route Indicator	
Reference Path Data Selector	0
Reference Path Identifier	E19A
LTP/FTP Latitude	582618.3295N
LTP/FTP Longitude	0124245.9410E
LTP/FTP Ellipsoidal Height (metres)	87.2
FPAP Latitude	582503.9270N
Delta FPAP Latitude (seconds)	-74.4025
FPAP Longitude	0124234.5760E
Delta FPAP Longitude (seconds)	-11.3650
Threshold Crossing Height	50.0
TCH Units Selector	0 (feet)
Glidepath Angle (degrees)	3.00
Course Width (metres)	105.00
Length Offset (metres)	48
HAL (metres)	40.0
VAL (metres)	50.0

Output data

Data Block	10 02 09 13 05 13 00 00 01 39 31 05 B3 3C 14 19 6A AA 74 05 68 17 BB BA FD 36 A7 FF F4 01 2C 01 64 06 C8 FA 27 F4 C1 5A
Calculated CRC Value	27F4C15A

Required Additional Data

ICAO Code	ES
LTP/FTP Orthometric Height (metres)	53.4